



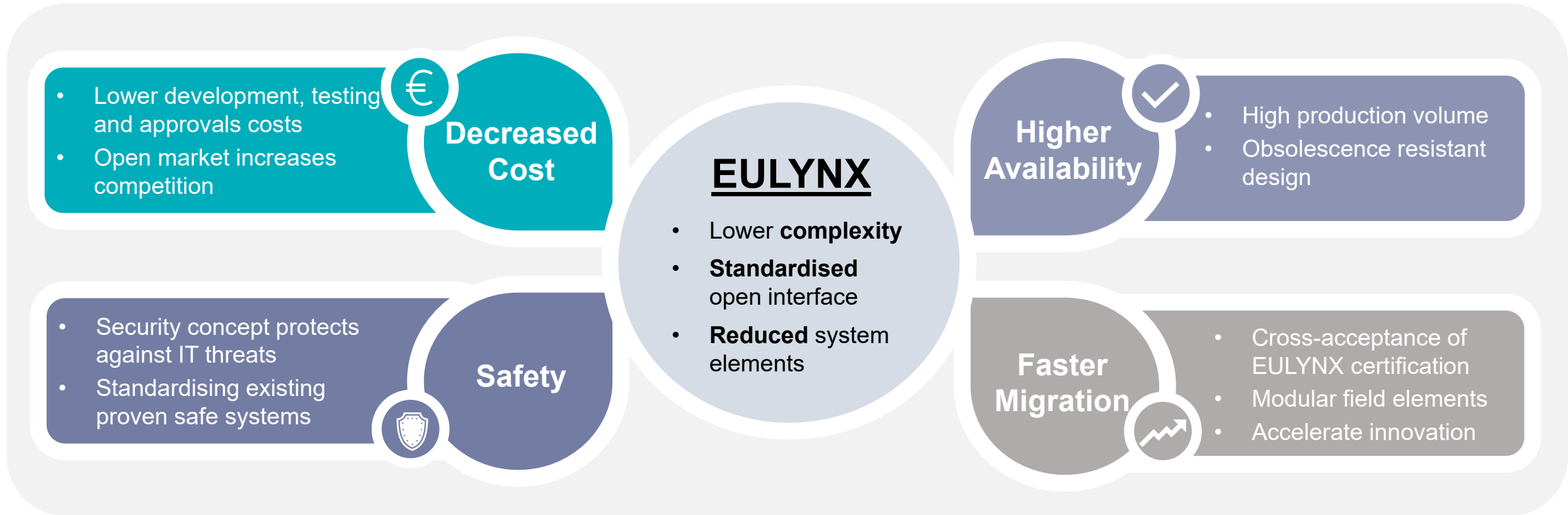
**TARGET 190PLUS**

**EULYNX in the GB Railway**

Research and Development  
Innovation is in our nature

# Why is EULYNX needed now?

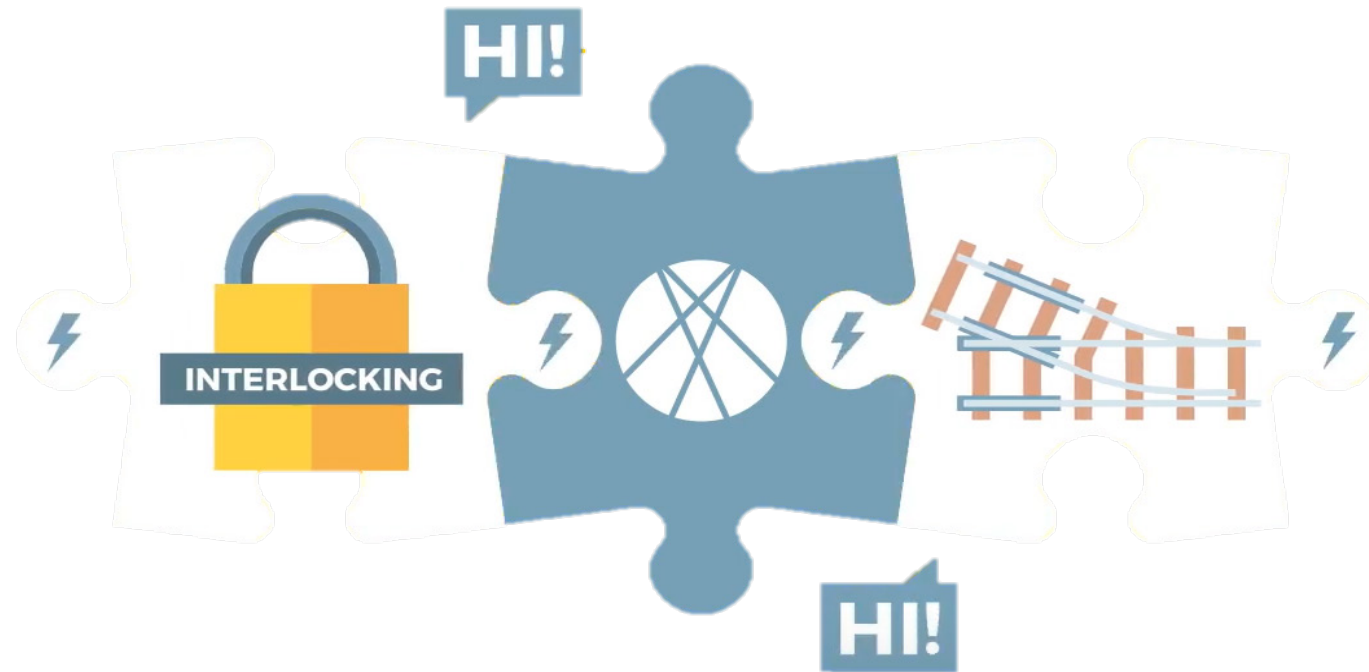
- Two-thirds of Britain’s railway signals need renewing in the next 15 years and the future conventional signalling work bank is **unsustainable**.
- EULYNX focuses on standardised interfaces for signalling data, monitoring/diagnostics and maintenance, which enables the **reduction in life-cycle costs, faster implementation**, and opens up the market to **new suppliers** and **innovations**.
- Network Rail has **committed** to adopting EULYNX; however, its success is dependent on genuine collaboration with us from both **Suppliers** and the **Regions**.





## What is EULYNX? (1/2)

- **EULYNX** is a European initiative by 13 Infrastructure Managers with a common goal of defining a **modular** signalling architecture with **standardised** interfaces.
- By defining and standardising interfaces, the goal is a significant reduction of the lifecycle cost for signalling systems.
- Standardised interfaces allow **two systems to communicate** regardless of who supplies them and enables the use of more off-the-shelf components.

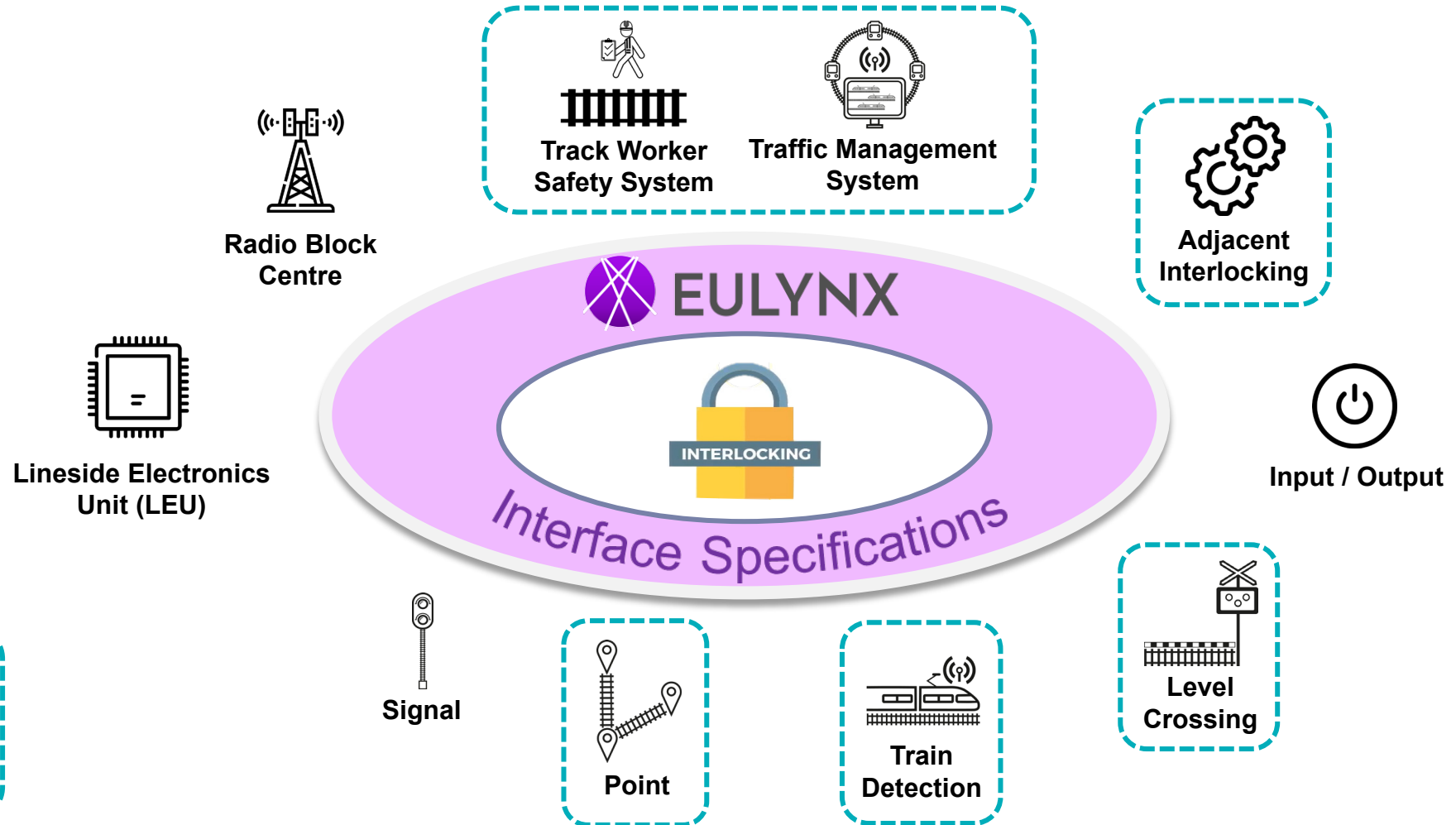


**EULYNX** increases competition by standardising interfaces, which leads to **faster migration** to a single solution.

For more information, visit <https://www.eulynx.eu/>

# What is EULYNX? (2/2)

- EULYNX enables all the interfaces to speak in the **same language**, without the need to change the underlying technologies.
- By removing the complexity between different parts of the system (as illustrated below), EULYNX enables the disconnection of the lifecycles of interlockings from other field elements. This will lead to a step change in levels of **reliability, availability, safety** and whole-life cost.



# Why is it important to get involved now?

Accessing the benefits of EULYNX is very important for the GB Railway. It is imperative that both **Suppliers** and the **Regions** come **together** to maximise the positive impact.



## Shape the application of EULYNX

There is a genuine **opportunity** for both the Regions and Suppliers to shape the application of EULYNX, as well as input into the specifications.

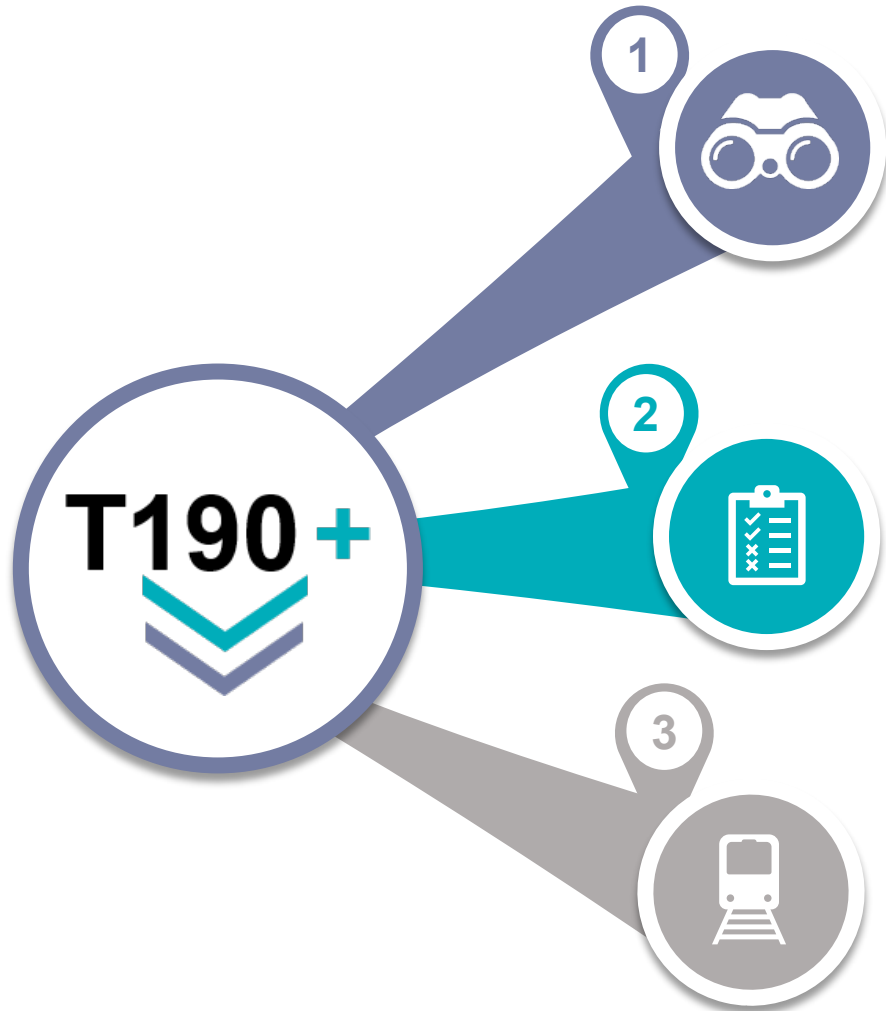
## Get 'Match Fit'

We want to work with you to get **ready** for CP7 & CP8 when contracts start mandating EULYNX. For suppliers, we need you to develop your products. For the Regions, we need you to come forward and offer trial sites. Only by working together, can we maximise the return from the programme.

## Future proofing the railway

Investing in an EULYNX signalling system **NOW** enables easier renewals in the future because of plug and play components. We can already start to access the benefits of EULYNX on our network!

# What opportunities are there to get involved?



## Shape EULYNX Adoption

### TODAY

**Opportunity** to help steer the application of EULYNX specifications for the GB network. This includes the development of applications and environmental elements using EULYNX Baseline 4 to achieve a stable baseline which will support the benefits for the GB network.

## 'Match Fit' with EULYNX Trials

### TODAY

Becoming match fit will only happen if both Regions and Suppliers **work together**. We need the Regions to come forward and volunteer trial sites. In that way, suppliers can match their products based on trial locations. A win-win situation.

## Future Proof the Railway

### BEYOND 2022

When regional re-signalling schemes come up for renewals, suppliers will be able to **bid for contracts** to supply the EULYNX interfaces. In turn, the Regions will look to have the EULYNX products in the contracts that they issue.

# Key Programme Contacts

**Nicola Furness**

Programme Technical Expert  
Network Rail

[Nicola.Furness@networkrail.co.uk](mailto:Nicola.Furness@networkrail.co.uk)

**James Dzimba**

Senior Responsible Owner  
Network Rail

[James.Dzimba@networkrail.co.uk](mailto:James.Dzimba@networkrail.co.uk)

**Smitha Viswanathan**

Research and Development Programme Manager  
Network Rail

[Smitha.Viswanathan@networkrail.co.uk](mailto:Smitha.Viswanathan@networkrail.co.uk)

Find out more about the Target 190plus Programme here: [www.networkrail.co.uk/target190plus](http://www.networkrail.co.uk/target190plus)

For more information regarding EULYNX, visit <https://www.eulynx.eu/>