

Dawlish sea wall residents' update

Rail minister officially opens new sea wall



On Friday 25 September, Rail Minister Chris Heaton-Harris officially opened the first section of the new Dawlish sea wall at Marine Parade(L). (R) Rail Minister Chris Heaton Harris with Anne Marie Morris MP, Cllr Andrea Davis and representatives from CrossCountry trains, GWR and Network Rail.

On Friday 25 September, the Rail Minister, Chris Heaton-Harris MP officially opened the new sea wall at Marine Parade, the first section of the £80 million Dawlish sea wall project to protect the railway line and the town from rising sea levels and extreme weather conditions.

On this occasion, the weather was kind to the minister and guests from Network Rail, GWR and CrossCountry trains as well as local MP Anne Marie Morris and Andrea Davis from Devon County Council, who took part in a socially-distanced opening ceremony and guided tour of the new promenade.

The tour included a look towards the next section of the project—the 415m stretch between Coastguards and Colonnades breakwaters—which was granted planning permission by Teignbridge District Council in August, before the ceremony concluded with the unveiling of a plaque to mark the official opening of the first section.

The Rail Minister, Chris Heaton-Harris said: “Our investment in this new sea wall will provide a resilient railway for generations to come, delivering for the thousands of passengers that rely upon this vital link every day, and the residents whose homes and businesses must be protected.

“This rigorous set of defences forms part of our ambitious plans to deliver reliable, punctual journeys across Devon and Cornwall, improving connections between communities to help the South West build back better, boosting the local economy and tourism.”



Artist's impression of the new promenade and pedestrian access to the beach which will form part of the next phase of the £80 million Dawlish sea wall project.

Work continues on the finishing touches to the sea wall



The new sea wall has been open for two months, during which time we have made significant progress in installing track drainage, permanent fencing and granite paving.

We hope you have enjoyed the new sea wall since its reopening. Since our last update, we have carried out plenty of work on the finishing touches to the wall. Firstly, we installed new track drainage, which was completed at the end of August and is a vital component in protecting the railway line.

Since then, we have started installing the permanent fencing along the railway boundary wall. In total, there are 345 fencing panels to install, nearly all of which are now in place.

Meanwhile, we have carried on with work on the surface at Boat Cove. The surface is being paved with granite paving stones or 'setts', which will run from underneath the footbridge over to the public toilets. The setts are cut with a table saw at our Dawlish Warren compound before being brought down to the construction site, where they are trimmed with a brick hammer.

We have also started installing granite setts around the viewing platform. Firstly we laid base material before laying down the individual stones.

We expect to complete work on both the permanent fencing and granite paving in October. Our attention will then turn to the stone cladding along the railway boundary wall and the lighting.

We would like to thank you for your patience as we continue our work on the new sea wall.



The granite setts are installed one by one with the use of hand tools.

Council approves the next stage of the project

We are pleased to announce that in August, we received approval from Teignbridge District Council to proceed with the next stage of the sea wall project, which runs between Colonnade and Coastguards breakwaters.

The work will see a high-level wider and safer public promenade incorporated into a new sea wall, ramped pedestrian access to the beach, a footbridge to link the two parts of the sea wall and an accessible footbridge with lifts for Dawlish station.

We are now working on the detailed programme of work and expect to begin construction later this year.

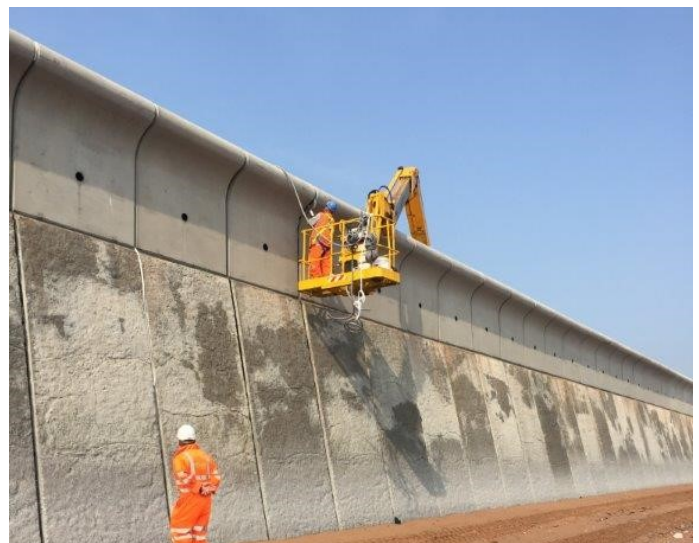
Upcoming activity

We currently have no more scheduled closures of the promenade and footbridge, but there may be an additional one in the future. We'll let everyone know if or when that is required.

The closures were put in place to allow us to carry out some further work on installing the granite paving at the viewing platform and Boat Cove, including the area around the



The next stage of the project will run for 415m, up to Coastguards breakwater.



Machinery was taken on to the path during the closures to carry out sealant works.

footbridge. We have also carried out some sealant works, which is the process of filling in the gaps between each wall panel, preventing water from leaking through during high tides.

Work on the granite paving at the viewing platform and fencing installation will continue over the next couple of weeks, but this can be done without having to close the path again.



Work on the fencing and granite paving should be completed in October.

Questions?

When will work on the new sea wall at Marine Parade be completed?

Work on the new sea wall at Marine Parade is expected to be completed later this year. Work on the fencing and paving is coming along nicely and will be completed in early October. There will then be a short break before we start work on the stone cladding and lighting.

Is cycling allowed on the new sea wall?

Cycling is not allowed on the new sea wall. Please remember that it's only designed to be used by pedestrians, pushchairs and wheelchairs.

Please don't cycle along the new promenade or on the section between Dawlish and Dawlish Warren and be considerate of others when using this space.

Temporary signs are currently in place to remind the public not to cycle on the new wall and we plan to install permanent signing in the near future.



Is the granite paving going to cover the whole length of the wall?

When work is completed there will be two sections of the promenade that are paved with granite setts. These sections are Boat Cove and the viewing platform. The inclusion of this granite paving was a condition that was included in the plans by Teignbridge District Council.

Are you going to bring back the community hub?

The weekly community hub was originally suspended indefinitely when lockdown restrictions were introduced back in March.

While the government restrictions have eased since then, they are frequently changing. We have started looking into how we can reintroduce the community hub while keeping to the guidelines and, most importantly, keeping you safe.

In the meantime, there are plenty of ways in which you can get in touch with us, or we can arrange a one-to-one meeting if you would prefer.

How to get in touch

24-hour National Helpline: 03457 11 41 41

Email: SouthWestRRP@networkrail.co.uk

Facebook/Twitter: @SouthWestRRP

More information and updates can be found at nr.co.uk/dawlishseawall