



Oxford Station Enhancements Project

September 2025 update

Agenda

North walkway opened
on time in August
2025



Project on target for
Botley Road reopening
August 2026?



- Introductions
- Timeline and progress update
- Four-week look ahead
- Piling works explained
- Stakeholder engagement
- Future Phase update

Who we have presenting

North walkway opened
on time in August
2025



Project on target for
Botley Road reopening
August 2026?



Francis McGarry
Investment Director



Giles Clark
Principal Programme Sponsor

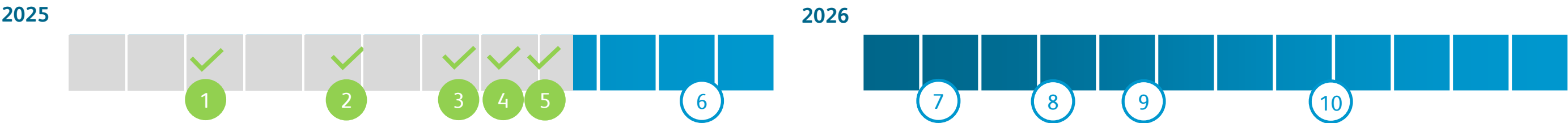


Phil Whitfield
Head of Network Management

Timeline

North walkway opened
on time in August
2025

Project on target for
Botley Road reopening
August 2026?



	Key projects	Date	Status	Update
①	Foundations for north side bridge supports completed	17-Mar-25	Complete	
②	700mm clean water pipe completed (Thames Water)	30-May-25	Complete	
③	125mm clean water pipe completed (Thames Water)	31-Jul-25	Complete	
④	Sewer diversion completed	27-Aug-25	Complete	
⑤	Northern pedestrian way available for public use	31-Aug-25	Complete	
⑥	Southern pedestrian/cycleway works to start	30-Nov-25		
⑦	Botley Road bridge replacement completed	9-Feb-26		<ul style="list-style-type: none">Work output from the first two of six disruptive enabling weekends (requiring railway closure) fully achieved despite difficulties in the first weekend. We recognise this is noisy work.
⑧	New surface water flood defence tank completed	2-Apr-26		<ul style="list-style-type: none">Alternative drainage solution being developed that will reduce the risk profile of the constructability and programme. This will require a re-sequence of this milestone but will provide an overall programme benefit. Output anticipated mid-October 2025.
⑨	Ne ground water flood defence structure completed	30-May-26		
⑩	Botley Road reopened to traffic	31-Aug-26		

Work progress – Kier / Network Rail

North walkway opened
on time in August
2025



Project on target for
Botley Road reopening
August 2026?

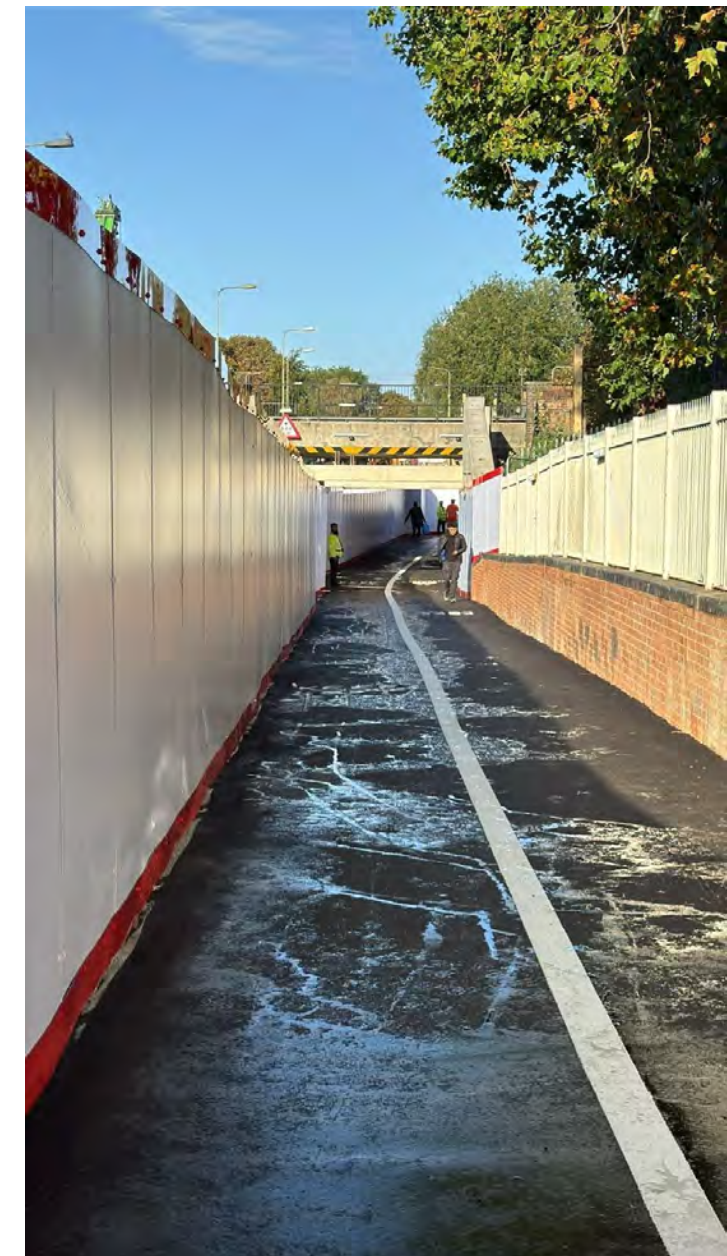
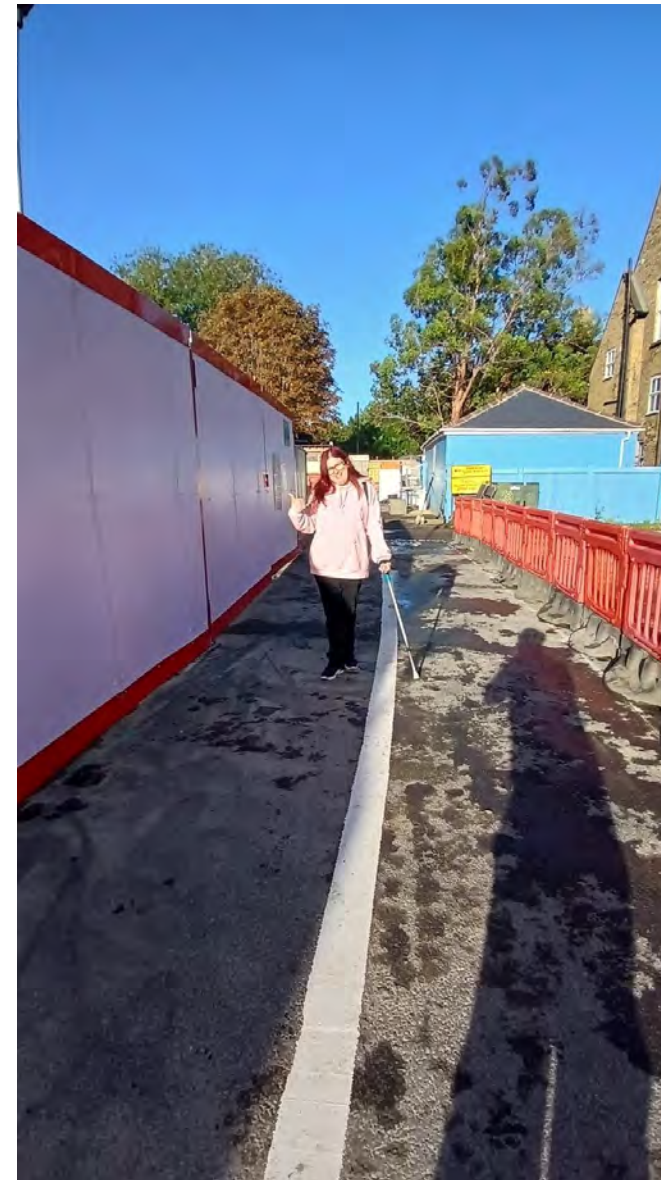
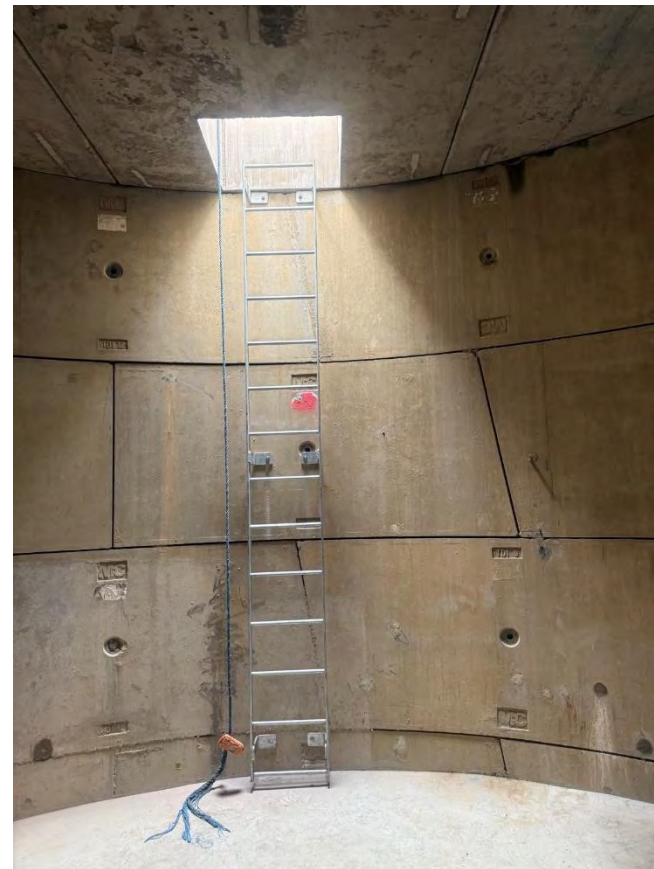


Sewer diversion

Physical works complete. Flows switched to the new sewer on the 30th August.

Northern Pedestrian walkway

Walkway opened as planned on the 31st August.



Four-week look back

- 1. Northern Walkway
 - ✓ Complete works (surfacing, lighting and white lining) and open (north walkway).
- 2. East and West Sewer connection
 - ✓ Fit out sewer and manholes
 - ✓ Switch flows
 - ✓ Remove sewer overpumping following switch of flow
- 3. Southern Walkway
 - ✓ Commence enabling works, including installation of sheet piles during railway closure (weekend, night-time working).

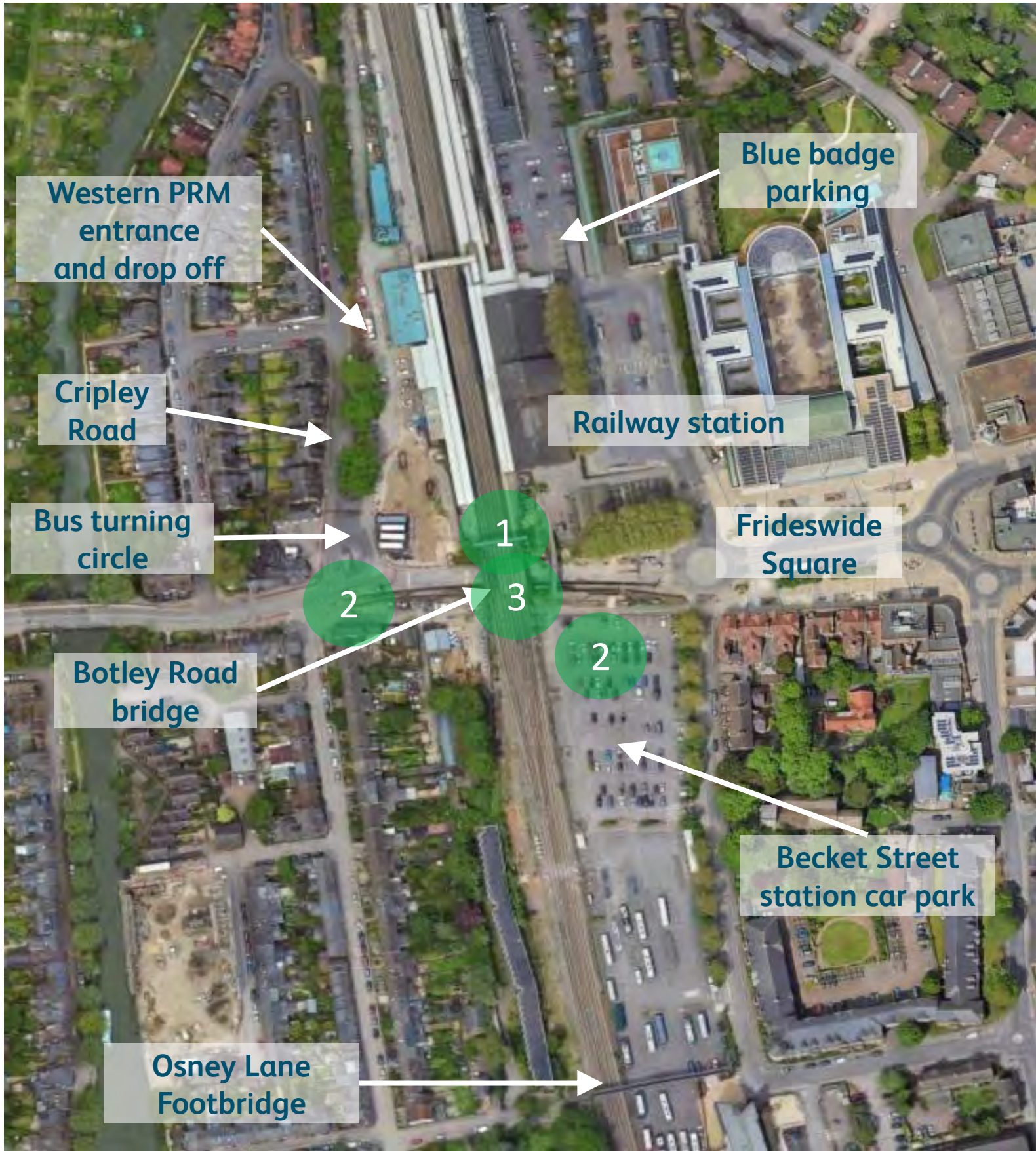
1	COMPLETE	Both Down lines blocked Both Up lines open	Week 25/26	23:05, 13 Sept - 04:40, 15 Sept 2025 22:55, 20 Sept - 04:40, 22 Sept 2025
2	2x 29hours closure	Both Down lines open Both Up lines blocked	Week 27/28	23:05, 27 Sept – 04:40, 29 Sept 2025 23:05, 04 Sept – 04:40, 06 Oct 2025
3	2x 29hours closure	Both Down lines blocked Both Up lines blocked	Week 34/35	00:10, 16 Nov – 04:45, 17 Nov 2025 00:10, 23 Nov – 04:45, 24 Nov 2025

North walkway opened on time in August 2025

✓

Project on target for Botley Road reopening August 2026?

✓



Four-week look ahead

- 1. Southern Walkway
 - a. Enabling works. Installation of sheet piles. This will include installation of some piles during railway closure (weekend, nighttime working).
 - b. Unplanned mid-week-night working, due to finding a more significant sub-surface obstruction than anticipated. Works include vacuum excavation and break out.
 - c. Ground improvement and preparation to allow central box section to be cast off-line.

Weekend-night working is limited to when closure of the railway is unavoidable due to it being impossible to run trains safely.

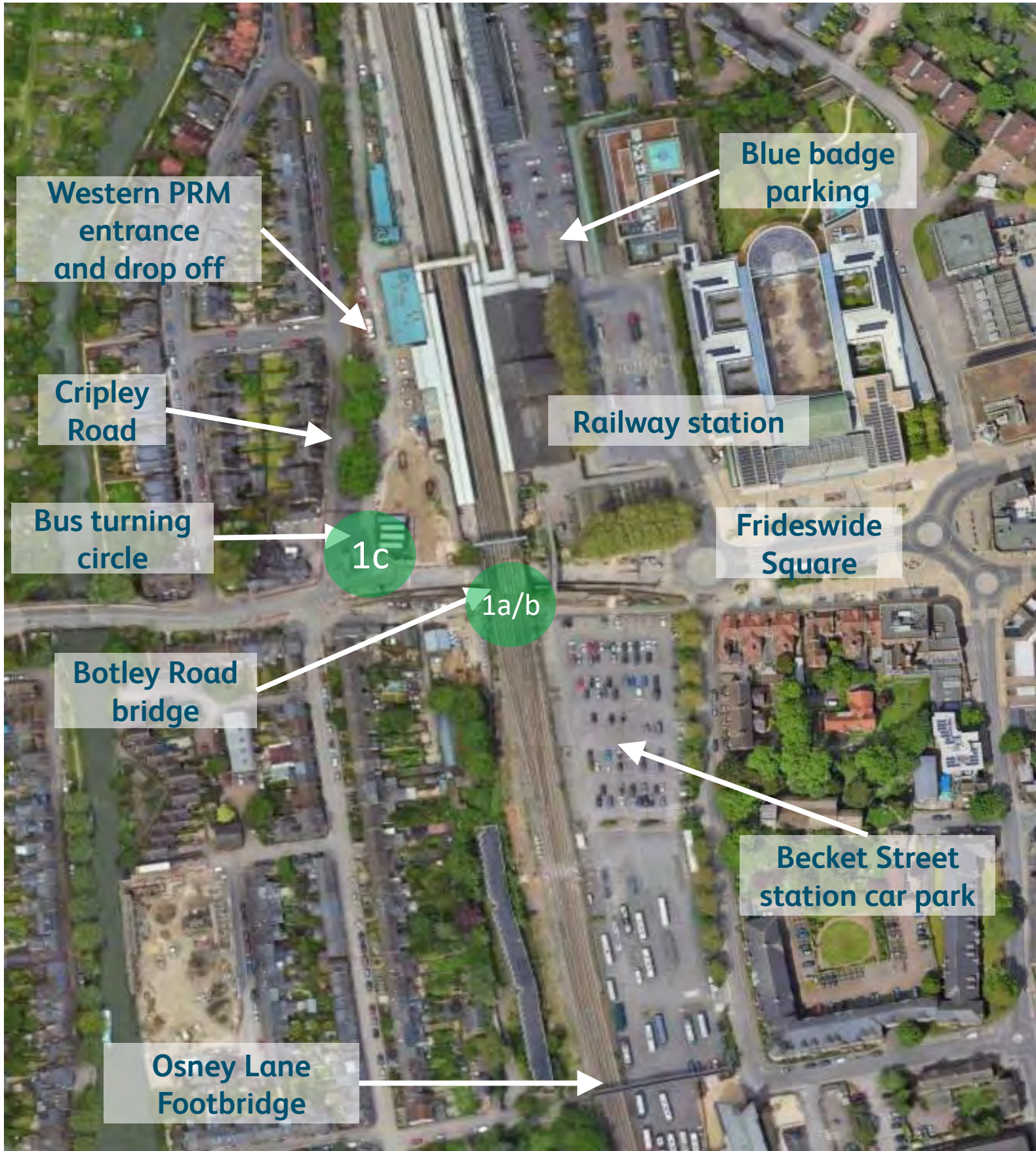
1	COMPLETE	Both Down lines blocked Both Up lines open	Week 25/26	23:05, 13 Sept - 04:40, 15 Sept 2025 22:55, 20 Sept - 04:40, 22 Sept 2025
2	2x 29hours closure	Both Down lines open Both Up lines blocked	Week 27/28	23:05, 27 Sept – 04:40, 29 Sept 2025 23:05, 04 Sept – 04:40, 06 Oct 2025
3	2x 29hours closure	Both Down lines blocked Both Up lines blocked	Week 34/35	00:10, 16 Nov – 04:45, 17 Nov 2025 00:10, 23 Nov – 04:45, 24 Nov 2025

North walkway opened on time in August 2025

✓

Project on target for Botley Road reopening August 2026?

✓



Four-week look ahead

What works are we actually doing at weekend-nights?

18 pairs of 15m long temporary piles to be installed on the West

14th to 15th September

21st to 22nd September

COMPLETE

18 pairs of 15m long temporary piles to be installed on the East

28th to 29th September

05th to 06th October

24 pairs of 9m long piles installed cross track

16th to 17th November

23rd to 24th November

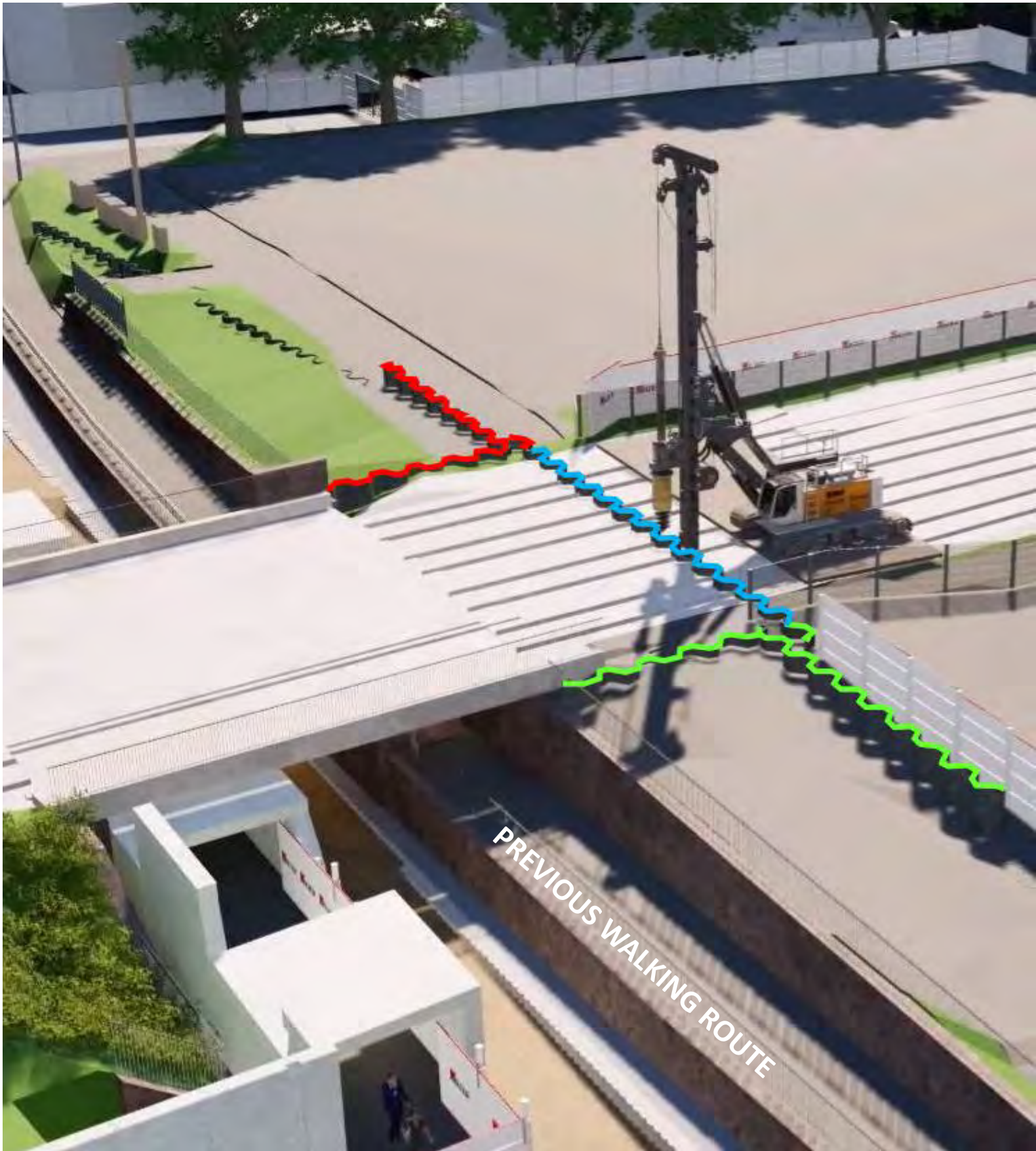
1	COMPLETE	Both Down lines blocked Both Up lines open	Week 25/26	23:05, 13 Sept - 04:40, 15 Sept 2025 22:55, 20 Sept - 04:40, 22 Sept 2025
2	2x 29hours closure	Both Down lines open Both Up lines blocked	Week 27/28	23:05, 27 Sept – 04:40, 29 Sept 2025 23:05, 04 Sept – 04:40, 06 Oct 2025
3	2x 29hours closure	Both Down lines blocked Both Up lines blocked	Week 34/35	00:10, 16 Nov – 04:45, 17 Nov 2025 00:10, 23 Nov – 04:45, 24 Nov 2025

North walkway opened
on time in August
2025

✓

Project on target for
Botley Road reopening
August 2026?

✓



Piling Works – why?

North walkway opened
on time in August
2025



Project on target for
Botley Road reopening
August 2026?



These works are essential to enable construction of the southern bridge abutment and walkway.

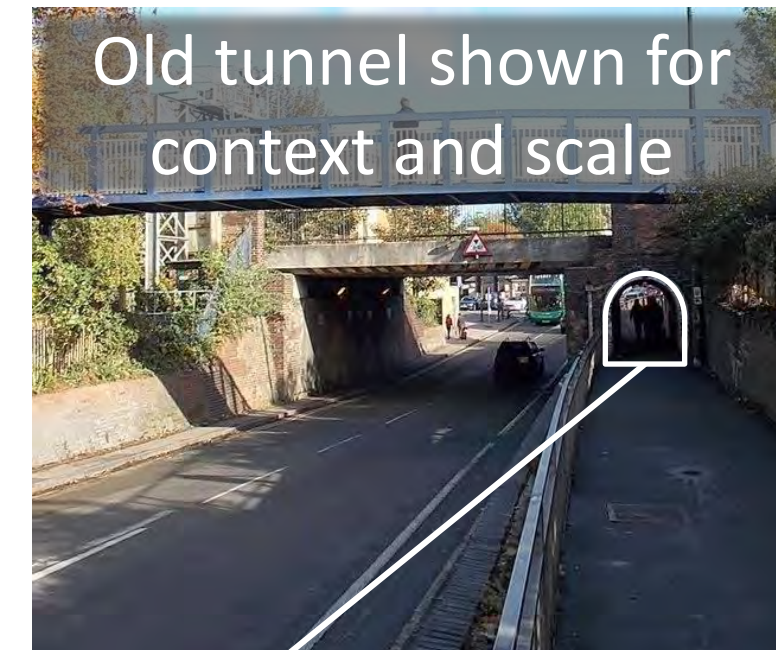
100 pairs of sheet piles will be installed on the south side of Botley Road. This allows the ground to be dug out, whilst holding up the existing Botley Road bridge and railway, Becket Street carpark and the land in front of the Westgate Hotel.

What happens next after these piles are installed?

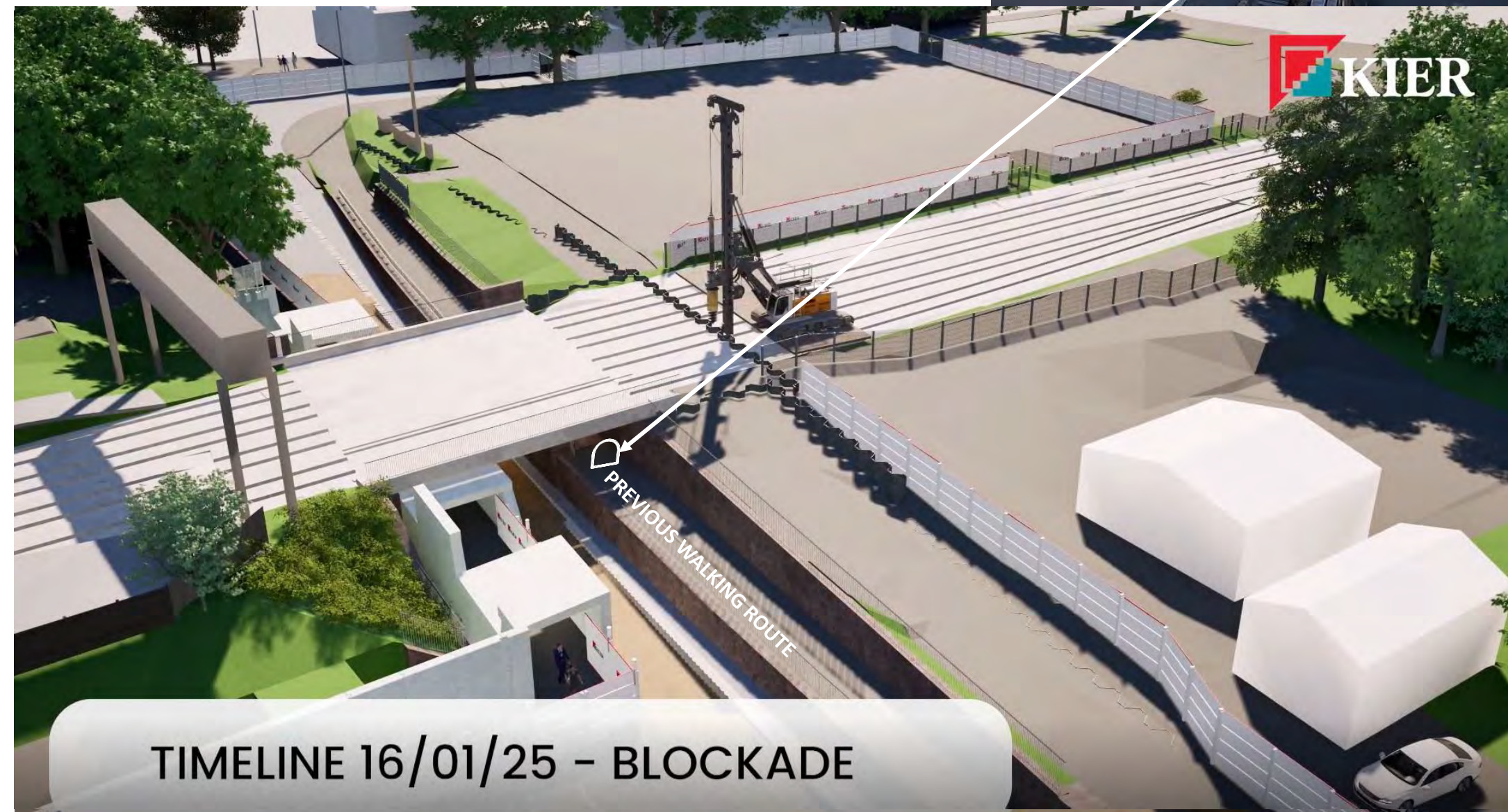
Dig out the ground either side of Botley Road bridge to build the foundations for the new south abutment and walkway. (north abutment/walkway built)

This approach leaves a small section of digging and break out to be done during the 8-day closure of the railway from 31 January 2026. During the closure:

- the railway lines, old bridge deck and remaining brickwork/earthwork will be removed,
- the new abutment/walkway sections and the new bridge spans will also be lifted into position.
- the railway lines will be put back.



Old tunnel shown for
context and scale



PREVIOUS WALKING ROUTE

TIMELINE 16/01/25 – BLOCKADE

Piling Works – noisy!

North walkway opened
on time in August
2025



Project on target for
Botley Road reopening
August 2026?



We recognise these works are noisy and we are doing everything we can to minimise the impact to residents. This includes:



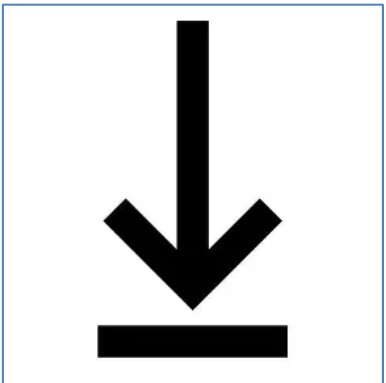
Minimising nighttime working. We try to work only during the day. Some piles though can only be installed with the railway closed. This can only be done at night.



Before we pile, **we pre-auger**. This loosens the ground where the pile will be installed. Making the work quicker and quieter.



We vibrate the piles in as deep as possible, before finishing off with a hammer. We try to only hammer during the daytime as it is louder than vibrating piles in.



Where we can **we will use a push piling rig**, rather than vibrating or hammering, this minimises noise levels. Limited to where we can use shorter piles (November closures).



We have noise and vibration monitors at key locations around site. Whilst we recognise the work is noisy, **we have not gone above pre-agreed levels.**

Piling Works – give us warning!

North walkway opened
on time in August
2025

✓

Project on target for
Botley Road reopening
August 2026?

✓

We know that these works are noisy. But they are unavoidable. As such we have tried to give as much notice as possible using multiple media to inform neighbours of both our planned and unplanned works.

Letter Drops

- 29 Aug letter drop within 300m radius
- 12 Sep letter drop within 300m radius
- 17 Sep letter drop within 300m radius
- 22 Sep letter drop within 300m + radius (see image)
- 25 Sep post/digital letter to 500m radius

Digital notifications, weekly newsletter and Facebook

1	COMPLETE	Both Down lines blocked Both Up lines open	Week 25/26	23:05, 13 Sept - 04:40, 15 Sept 2025 22:55, 20 Sept - 04:40, 22 Sept 2025
2	2x 29hours closure	Both Down lines open Both Up lines blocked	Week 27/28	23:05, 27 Sept – 04:40, 29 Sept 2025 23:05, 04 Sept – 04:40, 06 Oct 2025
3	2x 29hours closure	Both Down lines blocked Both Up lines blocked	Week 34/35	00:10, 16 Nov – 04:45, 17 Nov 2025 00:10, 23 Nov – 04:45, 24 Nov 2025



Current Walkway

257m from east bound bus stop to start of diversion route.
425m from east bound bus stop to end of diversion route.

+15m

Feedback on the new walkway has generally been positive.

Some amendments are proposed to continue to ensure the most positive environment for users:

- Additional marshal now positioned at the west end of the walkway.
- Agreement with BTP to undertake walk throughs of the walkway.
- Additional signage at east and west entrances to reiterate cyclists and scooters to dismount.
- New hoarding designs underway – targeting October install.
- Access to south side of Frideswide Square.
- Additional solar panels to allow lights to be on for longer.



Walkway diversion 8-day closure (Jan 26)

257m from east bound bus stop to start of diversion route.
425m from east bound bus stop to end of diversion route.

+200m

From **31st Jan** to **9th Feb** the railway lines crossing the existing Botley Road bridge will be closed.

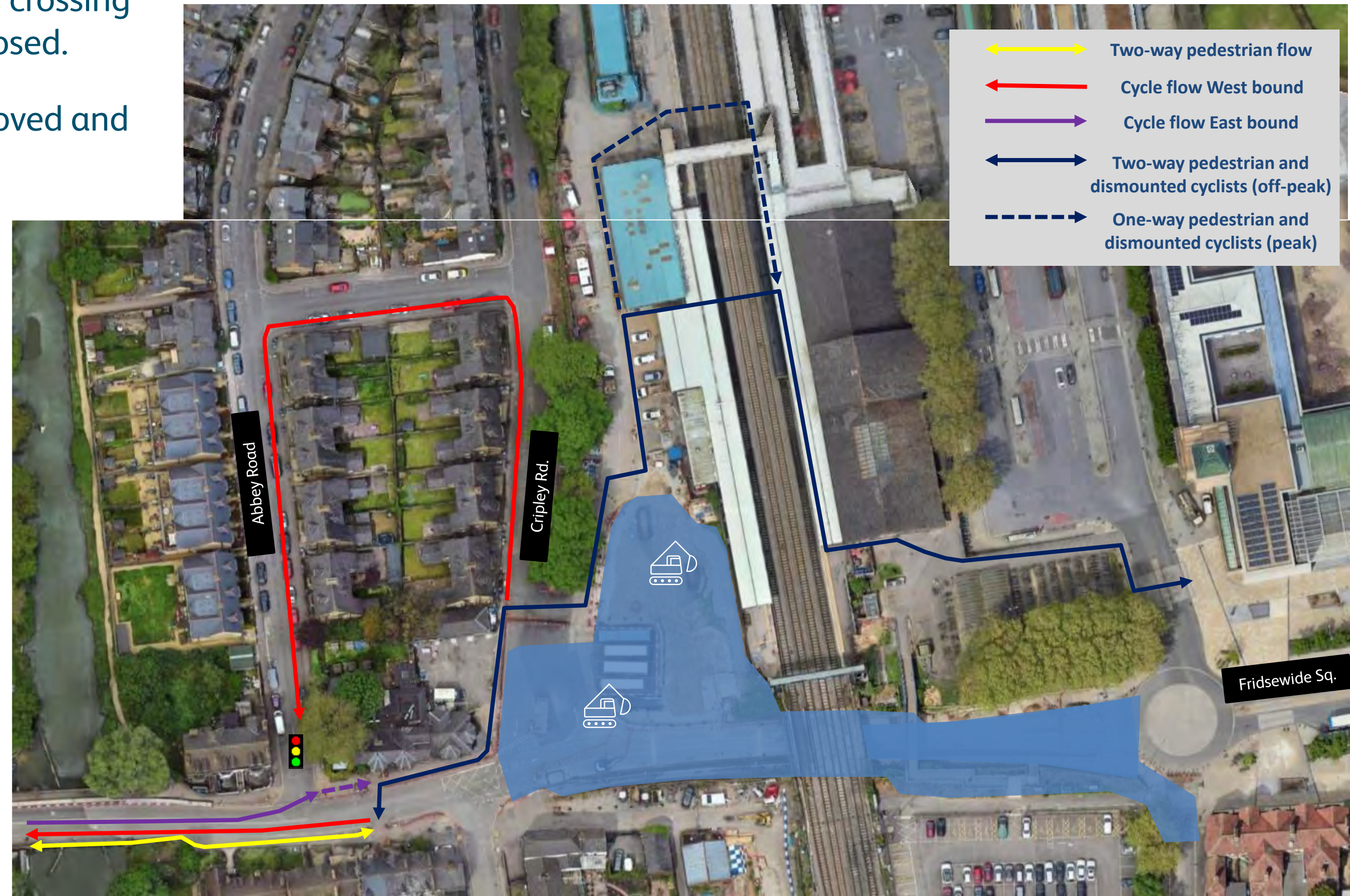
This allows the existing bridge to be removed and replaced with the three new spans.

There will be c. 5 days, when access via Botley Road will be unavailable.

An alternative route is proposed via the station for pedestrians and walked cycles.

Consideration is being given to what provision will be given mopeds.

A sub-working, working with key user groups is considering what mitigations are needed to support implementation, especially for people of reduced mobility.



Mitigation Tracker

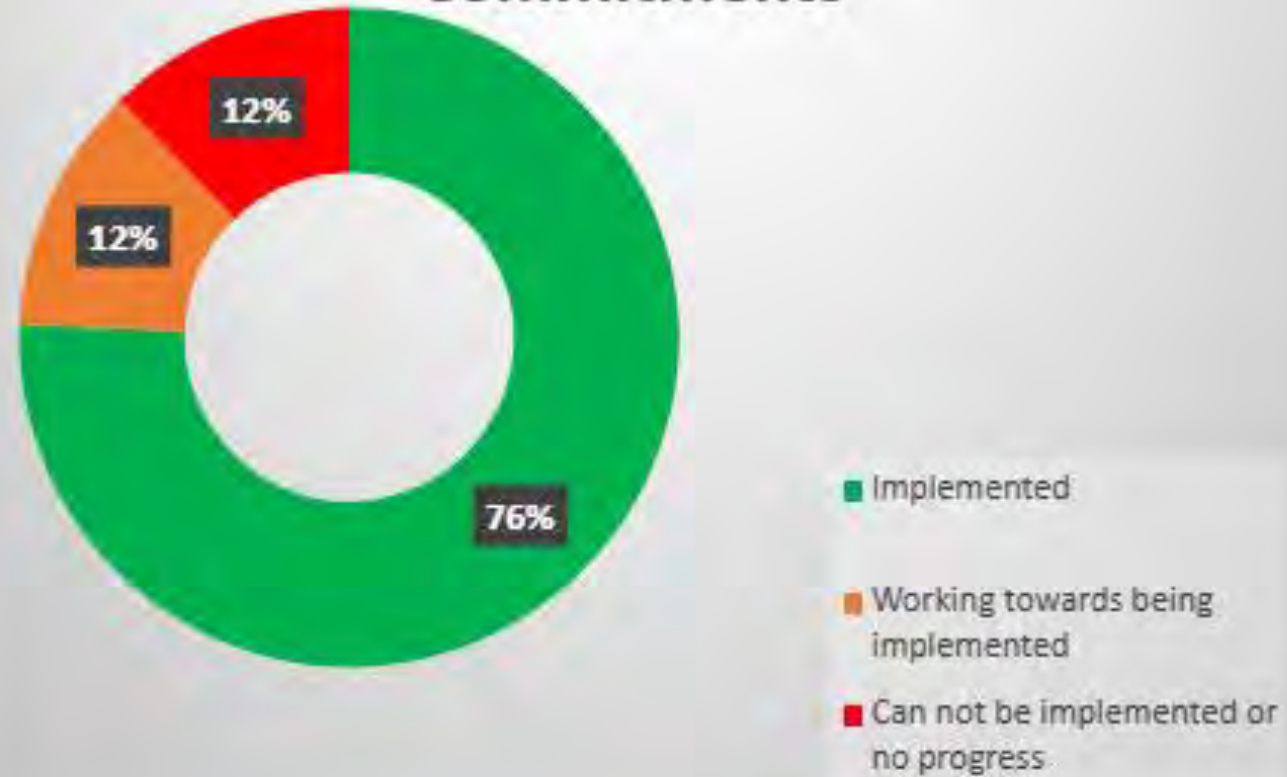
North walkway opened
on time in August
2025



Project on target for
Botley Road reopening
August 2026?



Baseline January 2025
Commitments



Update on main focus areas:

Bus shelter outside Frideswide Church;

- Proposed programme targeting the end of the year. This is under review and challenge.

Bus diversion route mitigations.

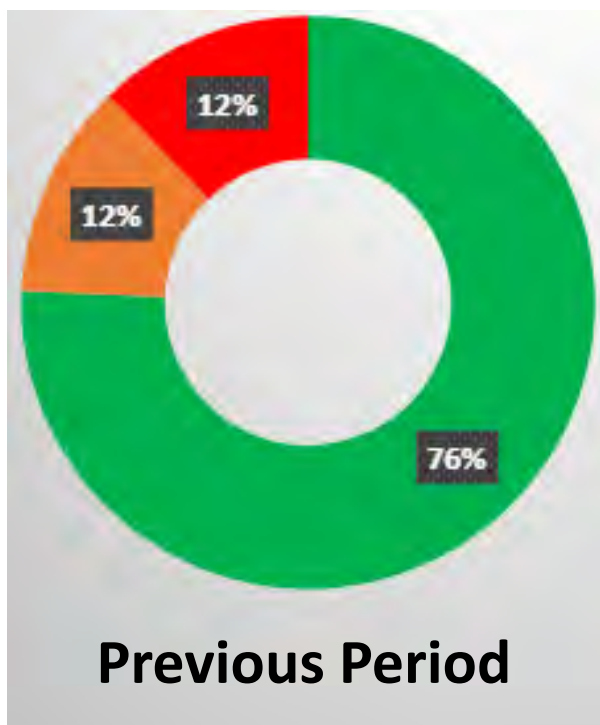
- Permanent digital speed boards and permanent signage installed 15/16th September.
- Date for additional parking on lower Cripsey Road tbc.

Improvement to look and feel of site.

- Hoarding updated targeting end October installation.

Business support and goodwill

- Pop-up shop progressing on Broad Street.
- Goodwill payments on target for end September.
- Access to southern side of Frideswide Square.



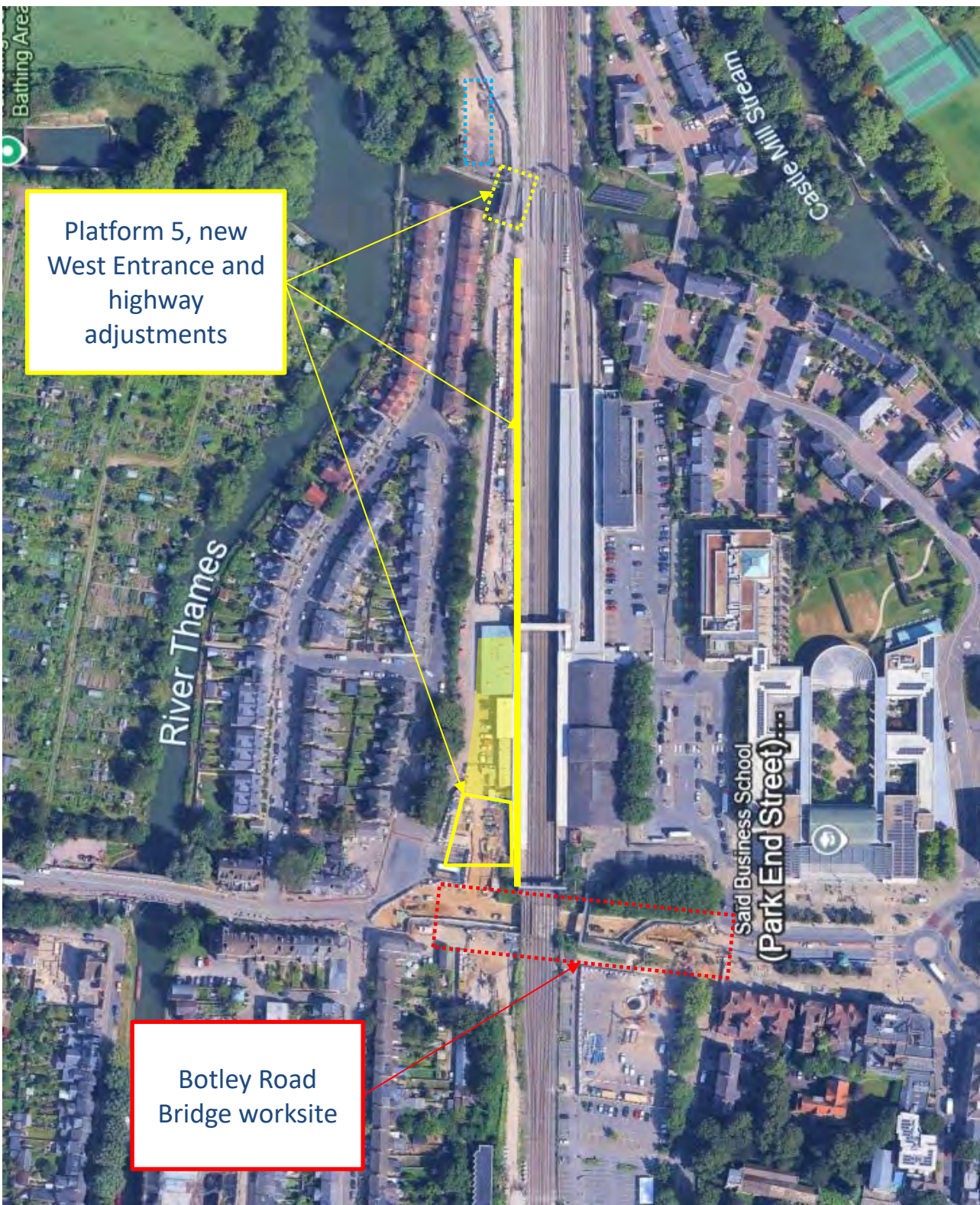
Indicative Rail Scope

Future works to enable East West Rail. These are expected to include the provision of new Platform 4/5 and a Western Entrance required to support increased train services and passenger numbers.

Construction of remaining rail scope paused to allow full focus on re-opening Botley Road as early as possible.

Works progressing well to re-phase future rail works. Key areas of focus:

- Validation of value for money following historic cost increase (associated with Botley Road), whilst maintaining core functionality.
- Validation of programme and price ahead of securing funding.
- Increasing delivery certainty – undertaking additional surveys and progressing key areas of design.



Indicative Schedule - Subject to funding release



OxfordFeedback@networkrail.co.uk

Slide Appendix

